




Ets GELDOP Rue de l'esplanade 6, B 7500 TOURNAI -Belgique -Belgium
 Belgium tél +32 479450495 -French tél +33 663213081 -RC: 7557

Attention : On taille Grand ! - - Warning : Our sizes are large !

Tailles articles droit, où court élastique en bas - Sizes Straight and Short Jackets élastic at the bottom.

05 Mai 2021 -05 May 2021.

Tailles Sizes	Poitrine Widht Chest	Hauteur du dos Straight Back height	Votre tour de poitrine Your Bust Centimeters
			
	Short élastic minus 5 cm - - Court élastique moins 5cm		
Size 8 years -	Width 43 cm		67 To 72 cm
Size 10 years -	Width 46 cm		72 To 76 cm
Size 12 years -	Width 49 cm		77 To 81 cm
Size XXS - 14 years	Width 52 cm	Straight Back height 62 cm	82 To 90 cm
Size XS - 16 years	Width 56 cm	Straight Back height 70 cm	90 To 98 cm
Size Small -	Width 60 cm	Straight Back height 73 cm	95 To 105 cm
Size Médium -	Width 63 cm	Straight Back height 75 cm	102 To 110 cm
Size Large -	Width 66 cm	Straight Back height 78 cm	108 To 116 cm
Size X L -	Width 70 cm	Straight Back height 80 cm	116 To 124 cm
Size XXL -	Width 74 cm	Straight Back height 82 cm	124 To 132 cm
Size XXXL -	Width 78 cm	Straight Back height 84 cm	130 To 138 cm
Size 4 XL -	Width 82 cm	Straight Back height 86 cm	138 To 146 cm
Size 5 XL -	Width 86 cm	Straight Back height 86 cm	146 To 155 cm

Article court avec élastique en bas, hauteur du dos moins 5 cm, autres dimensions sur commande –
 Short Jacket élastic at the bottom, back height minus 5 cm - Others dimensions on order –

Pour ne pas se tromper, je vous conseille de prendre un article que vous avez - Posée sur une table - zip fermé - tissus tendu - vous mesurez sous les bras, sous les aisselles : Vous avez 60 cm cela correspond à notre taille S –

In order not to be mistaken, I advise you to take a jacket, a parka that you have - Placed on a table - closed zip - stretched fabrics - you measure under the arms, under the armpits, You are 60 cm tall this corresponds to our size S -

CARTE DES COLORIS 2019 – 2021 COLOR CARD

Notre tissus avec enduction pour les vestes et pantalons le plus utilisé.

Numéro 1-) No 180 -100% Polyester Cordura 180 gr enduit une couche PU, colonne d'eau 1000.

Résistance chaîne à la traction 1441 Newtons. Résistance à la rupture 128 Newtons.

Résistance trame à la traction 1377 Newtons. Résistance à la rupture 155 Newtons.

Coloris en stock 32 couleurs.

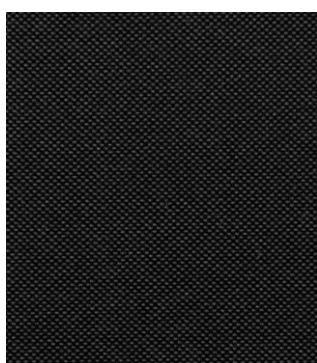
Our fabrics with coating. Coated Fabrics for Jackets and Pants - Most used fabrics.

Number 1-) No 180 - 100% Polyester Cordura 180 Sqm - PU coating one layer, water column 1000.

Chain: tensile strength of 1441 Newtons, breaking strength 128 Newtons.

Weft: tensile strength of 1377 Newtons, breaking strength 155 Newtons.

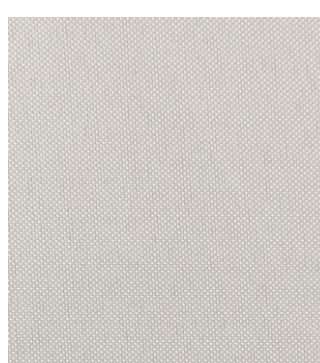
Current stock (Non-stop Stock): 32 colours.



01 – Black/Noir



02 - Anthracit gray



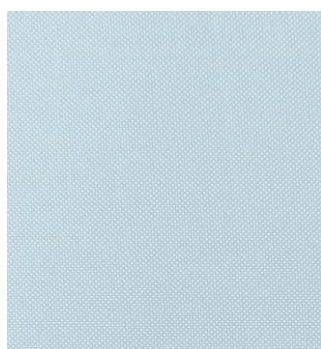
03 - Pastel Gray



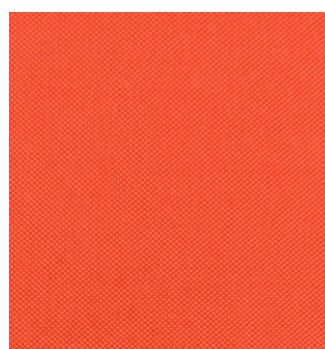
04 – Navy/Marine



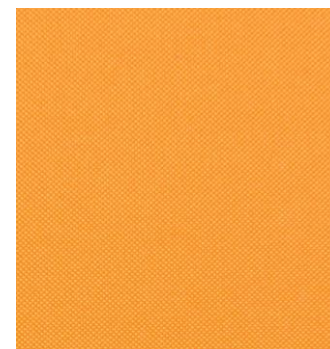
05 - Royal Blue



07 - Blue-Sky



08 – Intensiv Orange



09 - Orange



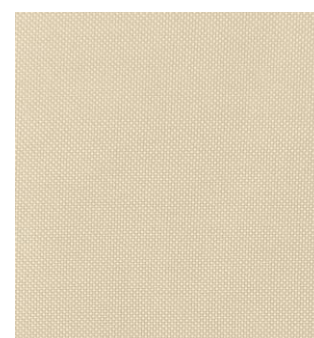
10 – Red/Rouge



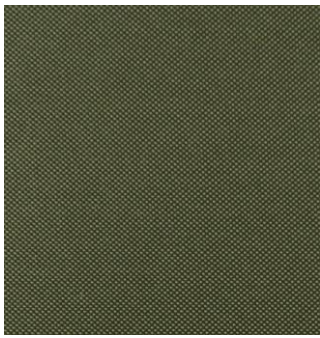
11 - Dark Red



14 - Pastel Pink



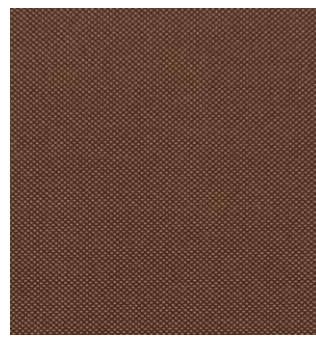
17 - Pastel White



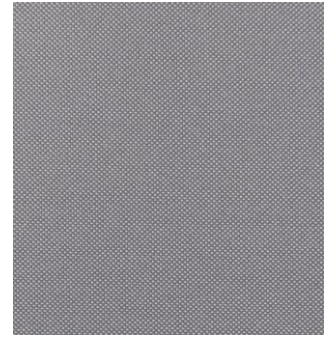
18 - Green Bottle



19 - Apple green



22 - Light Brown



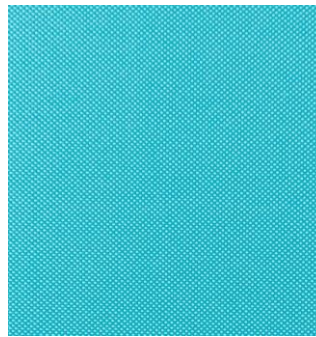
23 - Middle Gray



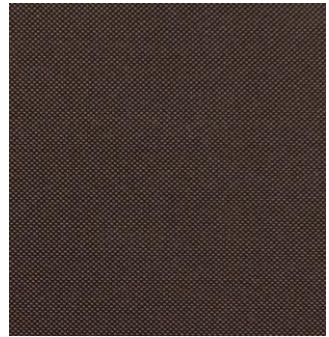
24 - Burgundy



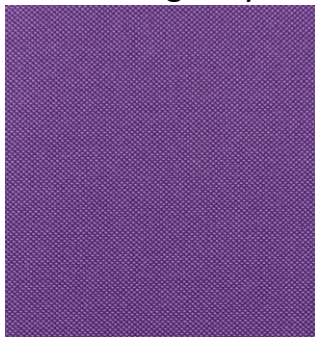
25 - Gypsy Blue



26 - Turquoise Blue



27 - Dark Brown



29 - Dark purple



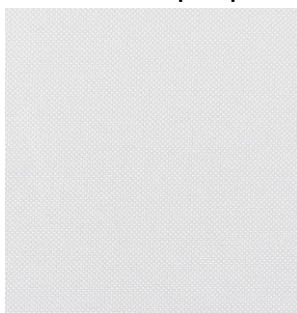
30 - Pastel purple



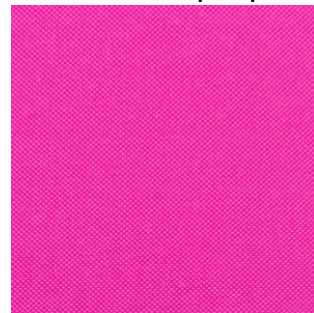
31 - Green Kelly



32 - Pistachio



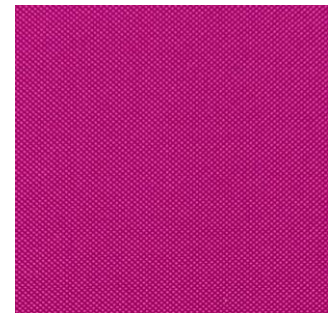
33 - White



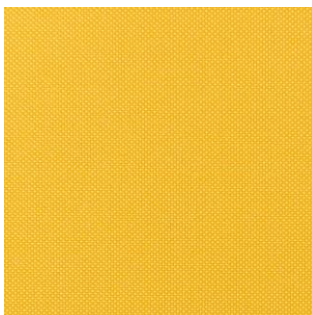
34 - Intensive Pink



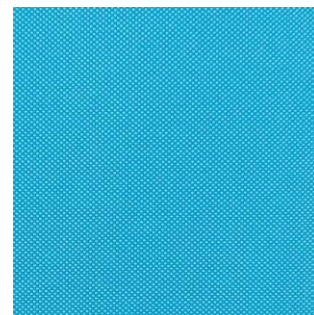
35 - Intensive Yellow



36 - Fuschia



37 - Sun Yellow



38 - Light Blue Lazur



39 - Dark Blue Lazur



50 - Raspberry

Les coloris peuvent varier selon la configuration de votre écran.

Depending on screen (Monitor) configurations products colour may differ from the actual one -